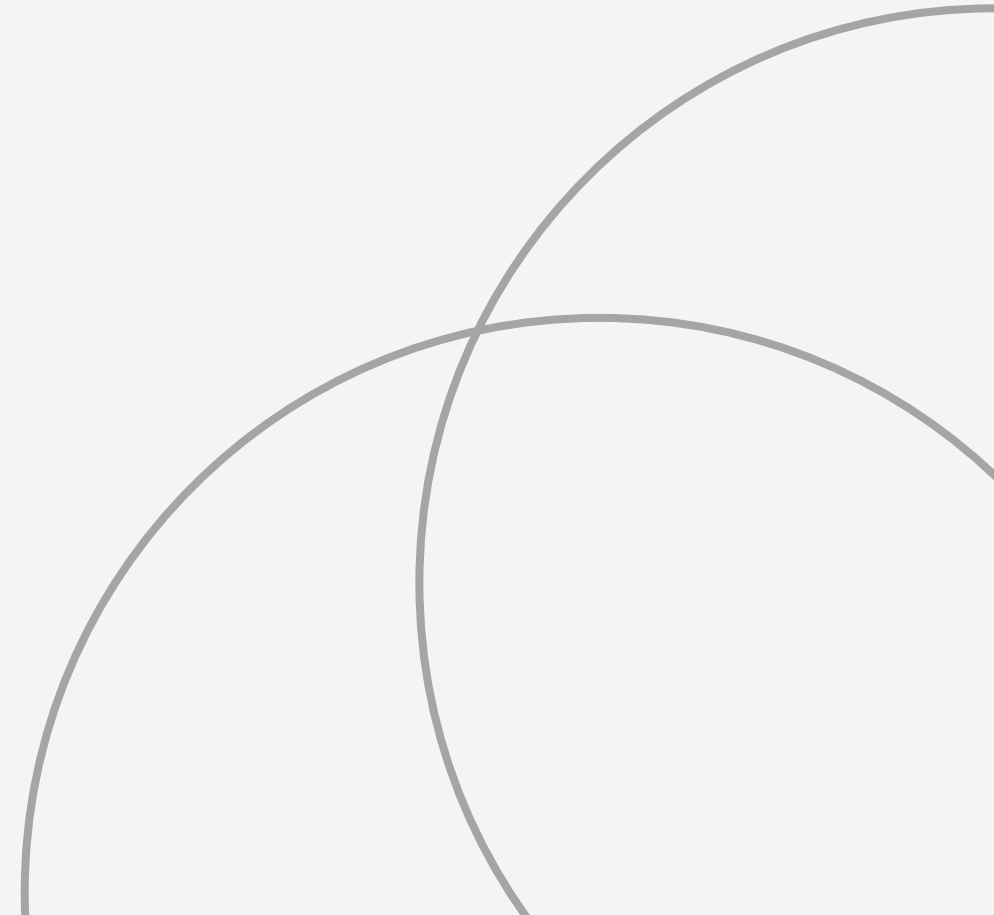


MyoNova Device Prospectus

Reachable Technologies

Version 1, 2023



Our story

Community co-design overview

Problem

Individuals with hand weakness often use a traditional universal cuff, often requiring caregiver assistance to interchange everyday objects.

Founder, Will Muter, entered the MIT NSF I-CORPs* program to set out and validate the problem. Through interviews with assistive tech users, clinicians, and caregivers, a clear need for an intuitive device allowing independent item interchanging emerged.

Progress

Since then, our team has grown with CTO, Santiago Hirschmann, and Sammy Alba to develop the Reachable device, a reinvention of the universal cuff to allow people to independently use everyday objects.



Left, Will Muter, Founder & CEO;
Center, Sammy Alba;
Right, Santiago Hirschmann, Co-Founder & CTO

About us

Reachable Technology LLC
formalized in 2023

Vision

We see a future where disabilities are not a barrier to independence, thanks to adaptive technology that's an intuitive extension of the human experience.

Mission

Transforming challenges to independence.

*Massachusetts Institute of Technology National Science Foundation Innovation Corps

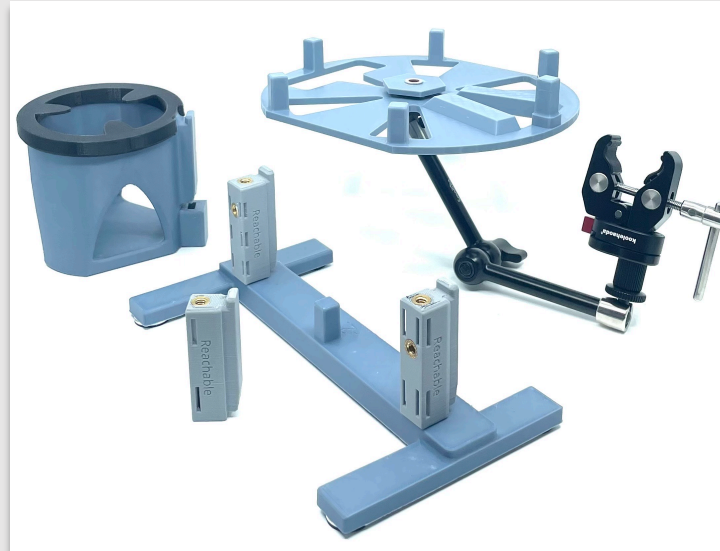
Current technology does not address the needs of individuals with grasping weakness

Low-tech devices



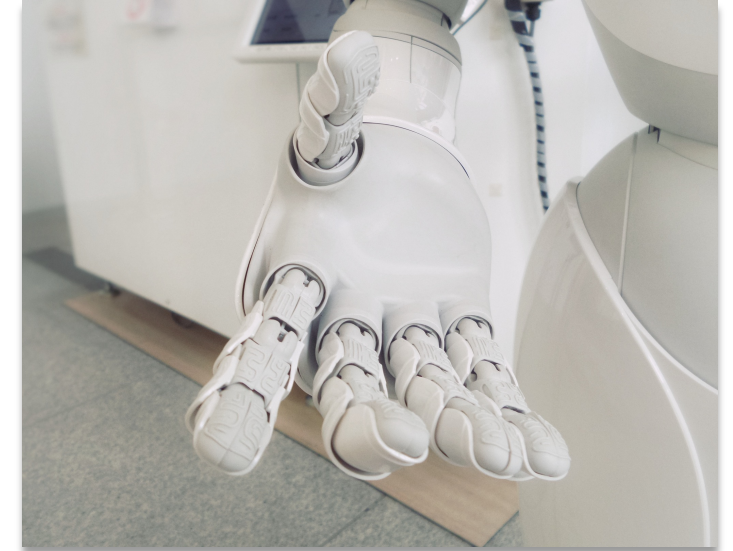
- Little versatility
- Rigid technology
- Low quality, unreliable materials

MyoNova device



- Versatile modular device
- Easily harnessed by patients
- Affordably priced

High-tech devices



- Expensive
- Requires extensive training
- Professional setup required

Using the MyoNova device

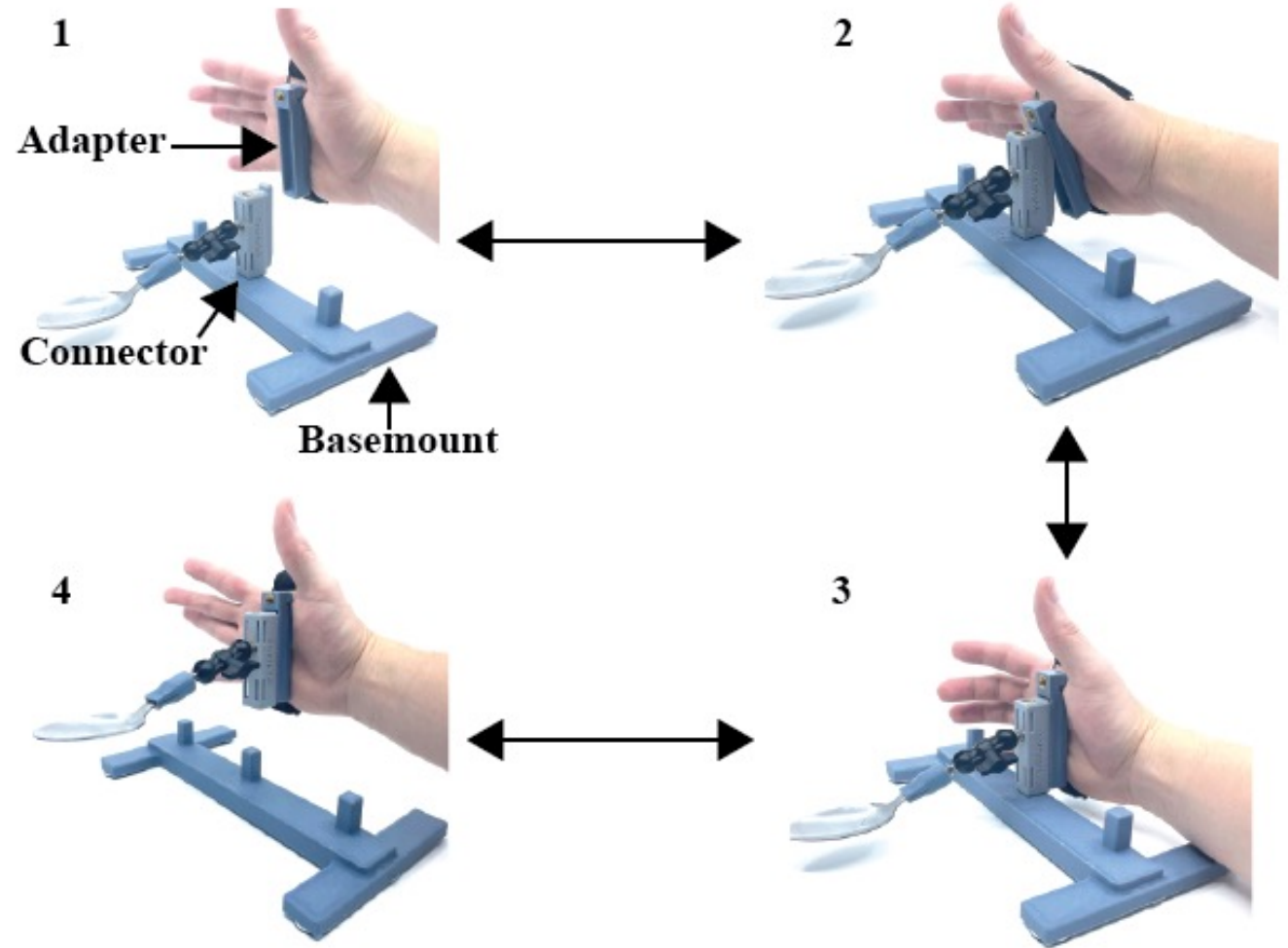
1. The adapter is fixed around the hand like a universal cuff.

- A magnetic, mechanical latch is embedded in the adapter.
- The connector has an opposite latch embedded.
- The basemount stores and correctly orients all objects allowing ease of use.

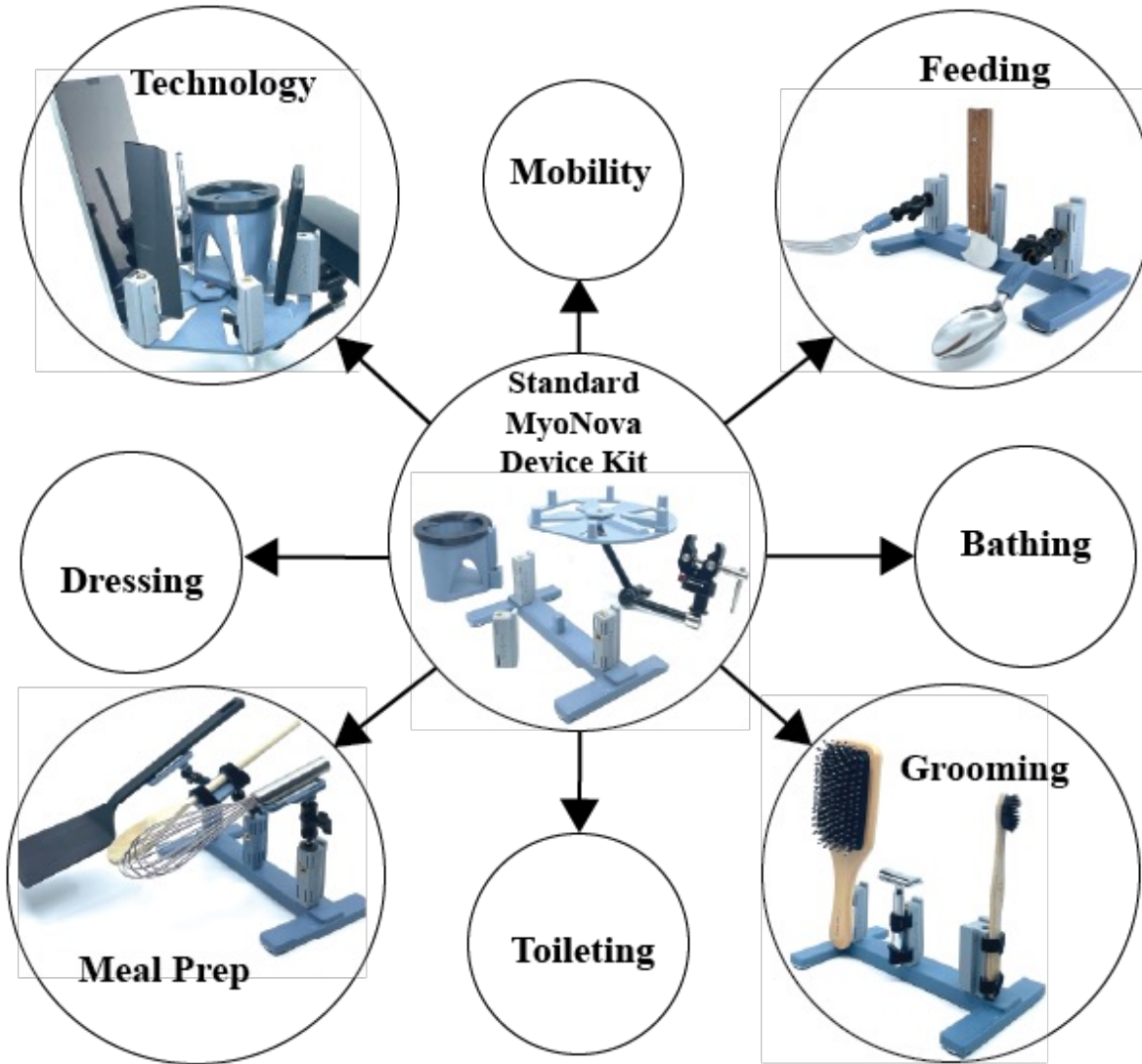
2&3. The user brings the adapter over and down on the connector to latch both together.

4. The user is free to take the connector off-and-on the basemount

- The order can be reversed to switch to another object.



Versatility with the MyoNova device



The middle circle details the universal design of the MyoNova device kit which can be used in a variety of daily applications.

Similar to the idea of Legos, the MyoNova device can be tailored to meet the unique needs of its user.

From grooming, to feeding, to toileting, the MyoNova device allows the user to decide which goals and priorities are most important to them. The user-centric design allows independence in a multitude of daily activities.



Device Impact

From the origin of ReachAble, we have co-designed and developed with community-based members to improve the lives of those with grasping weakness.

Sammy's story

Sammy is a Boston based community member with a cervical level spinal cord injury. Will, co-founder, and Sammy, co-designer, became friends through a shared interest in assistive technology in 2022.

Sammy helped co-design the MyoNova device through early prototype testing and amazing first-hand feedback.

Feeding capability



Technology capability



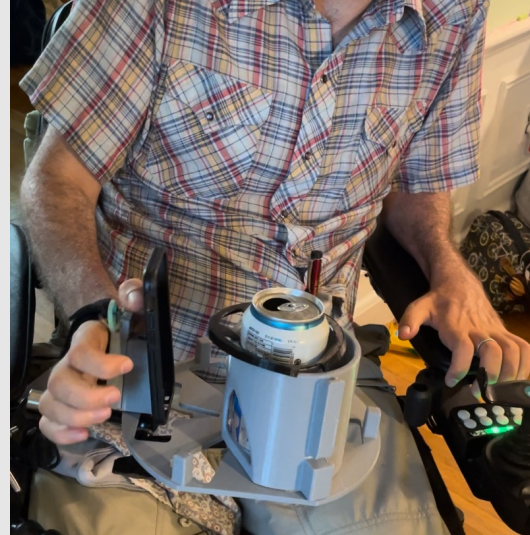
Today, the MyoNova Device has continued to evolve with use-cases outside of feeding and technology. Sammy has continued co-designing with ReachAble.

Alex's story

Alex is also a Boston based community member with a cervical level spinal cord injury. He is a do-it-yourself maker and became interested in our project with our first prototypes.

He provides significant insight about the device, helping inform future development.

Technology capability



Disengaging capability



Feeding and technology use has been most important to Alex. We have since co-designed to allow independence in additional daily activities.

How to stay informed

Become the first members of our community

By joining our community, you can..

- Beta test the device and provide feedback
- Impact the device's usefulness and design
- Receive the latest product and feature updates
- Directly communicate with the founders



Reachable-tech.com

[Check out a video of the early prototype in use](#)

Contact information

Will Muter

Phone | 781-226-4448

Email | will@reachable-tech.com

Website | reachable-tech.com

Join our [email list](#) to learn about updates on product development

Fill out the form on our [website](#) to participate in our user testing program